

GATE VALVES



GATE VALVE

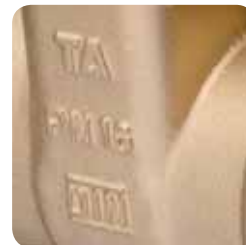
AMETAL® construction makes the TA 60 gate valve a tough operator, and ensures a long lifetime of trouble-free operation in heating, cooling and tap water systems. TA 60 takes up less space due to the non-rising spindle construction.



METAL TO METAL SEALING
For longer lifetime and reduced maintenance costs.



CLENCHED LOCKRING DESIGN
For optimum manoeuvrability.



AMETAL® CONSTRUCTION
Dezincification resistant alloy that guarantees a longer valve lifetime, and lowers the risk of leakage.

TECHNICAL DESCRIPTION

Applications:

Heating and cooling systems
Tap water systems

Function:

Shut-off

Dimensions:

DN 8-150

Pressure class:

See each product

Temperature:

Max. working temperature: 170°C

Material:

Body: AMETAL® or gunmetal.
Bonnet: AMETAL®, DN 125-150 gunmetal.
Wedge: AMETAL®, DN 125-150 gunmetal.
Stem and fastening: AMETAL®
Gaskets: PTFE/Graphite and aramid fibre.

AMETAL® is the dezincification resistant alloy of TA.

Flanges:

According to EN 1092-3, ISO 7005-3.

Face to face length:

DN 32 - 150: EN 558-1 Series 14
DN 40 - 150: ISO 5752 Series 14

Bonnets:

DN 10-50 has a threaded bonnet with a flat seal.
DN 65-150 has a flange joint between the bonnet and the body and is supplied with a flat seal and stainless allen screws.

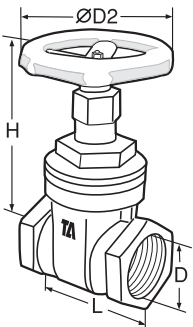
Approvals:

TA No 51 060/51 061: Approved by Bureau Veritas, No 03659/G1 BV.
TA No 51 064: WRAS No 0612042. SAI Global, No SMK0772.



Female parallel thread

Thread according to ISO 228
AMETAL®

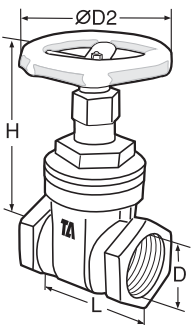


PN 16, EN 12288, BS 5154, (SS 2599)

TA No	DN	D*	D2	L	H	Kvs
51 060-008	8	G1/4	60	42	72	4
51 060-010	10	G3/8	60	49	72	6
51 060-015	15	G1/2	60	56	77	13
51 060-020	20	G3/4	70	61	95	40
51 060-025	25	G1	70	69	102	60
51 060-032	32	G1 1/4	80	77	122	100
51 060-040	40	G1 1/2	90	81	138	150
51 060-050	50	G2	100	95	160	270
51 060-065	65	G2 1/2	120	112	195	450
51 060-080	80	G3	140	122	220	700
51 060-090	100	G4	140	160	270	1400

Female parallel thread

Thread according to ISO 7/1
AMETAL®



PN 25, AS 1628

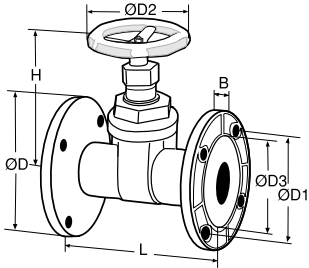
TA No	DN	D	D2	L	H	Kvs
51 064-315	15	Rp1/2	60	58	77	13
51 064-320	20	Rp3/4	70	63	95	40
51 064-325	25	Rp1	70	73	102	60
51 064-332	32	Rp1 1/4	80	83	122	100
51 064-340	40	Rp1 1/2	90	86	138	150
51 064-350	50	Rp2	100	99	160	270

TA 60

SHUT-OFF VALVES

Fixed flanges

AMETAL®

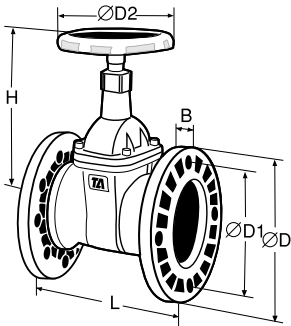


PN 6, ISO 7005-3, EN 1092-3, (SS 335)

TA No	DN	D	D1	D2	D3	L	H	B	Number of bolt holes	Kvs
51 061-025	25	100	75	70	60	110	102	10	4	60
51 061-032	32	120	90	80	70	130	122	11	4	100
51 061-040	40	130	100	90	80	140	138	12	4	150
51 061-050	50	140	110	100	90	150	160	13	4	270

Fixed flanges

Gunmetal



PN 16, ISO 7005-3, EN 1092-3, EN 12288, (SS 2821, SS 335)

TA No	DN	D	D1	D2	L	H	B	Number of bolt holes	Kvs
51 061-425	25	115	85	70	110	102	11	4	60
51 061-432	32	140	100	80	130	122	12	4	100
51 061-440	40	150	110	90	140	138	13	4	150
51 061-450	50	165	125	100	150	160	15	4	270
51 061-465	65	185	145	120	170	195	16	4	450
51 061-880	80	200	160	140	180	220	17	8	700
51 061-890	100	220	180	140	190	270	20	8	1400
51 061-891	125	250	210	180	200	390	22	8	1900
51 061-892	150	285	240	180	210	425	22	8	2100

The products, texts, photographs, graphics and diagrams in this brochure may be subject to alteration by Tour & Andersson without prior notice or reasons being given.

For the most up to date information about our products and specifications, please visit www.tourandersson.com.

2-5-5 TA 60 2009.01

we knowhow

TA