

Tender specification:

Oventrop bronze gate valve “Hygate ATR” without draining facility, with handwheel.

Body, bonnet and wedge made of bronze, non-rising stem made of dezincification resistant brass (DZR). Stem seal with re-adjustable gland packing made of material containing PTFE. Gland nut made of brass. Threads according to DIN EN 10226 with thread runout.

Technical data:

Max. operating pressure p_S : 25 bar (PN 25)
 Operating temperature t_S : -10 °C up to +200 °C for water
 (0 °C up to 150 °C for water vapour as saturated steam)

Function:

The Oventrop bronze gate valves offer optimum functional efficiency and a long service life in all pipework systems for heating and water treatment, shipbuilding, machinery and plant engineering as well as the chemical industry.

Wide external hexagon sockets with threads according to DIN EN 10226 and cylindrical thread runouts allow for an easy installation.

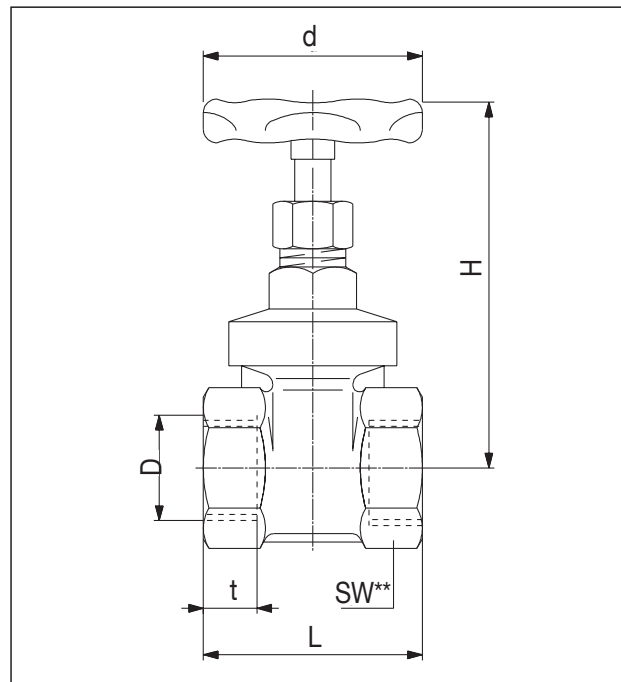
The non-rising stem permits a compact height. The valve is operated with the help of a strong handwheel.

Advantages:

Corrosion-proof bronze gate valves possess an advantage, when compared with brass gate valves, if used with media at higher temperatures and pressures and when handling liquids corrosive to brass.

Model:

Body, bonnet and wedge made of bronze. Stem made of dezincification resistant brass (DZR), gland packing made of material containing PTFE. Handwheel made of steel sheet.



Dimensions

Application:

Central heating and cooling systems with closed circuits and industrial plants, for operation with non-aggressive, harmless fluids (e.g. water or suitable water and glycol mixtures according to VDI 2035/ÖNORM 5195). Material resistant to: Mineral, heating and hydraulic oils, water vapour as well as air and other non-aggressive gases (not suitable for gaseous fluids group 1 according to directive 2014/68/EU).

(The valid rules and standards for the use of these media may restrict the temperature range.)

Dimensions and item numbers:

DN	D	L	t	H	dØ	kvs*	Zeta*	SW**	Weight in gram	Item no.
10	G 3/8	48	11.4	78	50	10	0.4	24	256	1043003
15	G 1/2	55	15	80	50	11	0.9	27	234	1043004
20	G 3/4	60	16.3	89	50	34	0.3	32	381	1043006
25	G 1	68	19.1	101	60	46	0.4	41	601	1043008
32	G 1 1/4	78	21.4	118	80	60	0.7	50	987	1043010
40	G 1 1/2	80	21.4	127	80	105	0.4	58	1219	1043012
50	G 2	93	25.7	148	90	170	0.4	70	2060	1043016
65	G 2 1/2	110	30.2	170	100	280	0.5	85	2913	1043020
80	G 3	120	33.3	213	120	420	0.4	100	4612	1043024

* k_{VS} values in m^3/h with Δp 1 bar. Zeta values related to the inner pipe diameter according to DIN EN 10255.

**SW = Spanner size

Subject to technical modifications without notice.

Product range 5
 ti 323-EN/10/MW
 Edition 2018