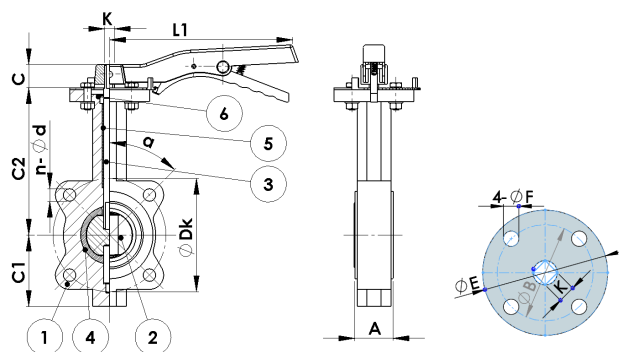
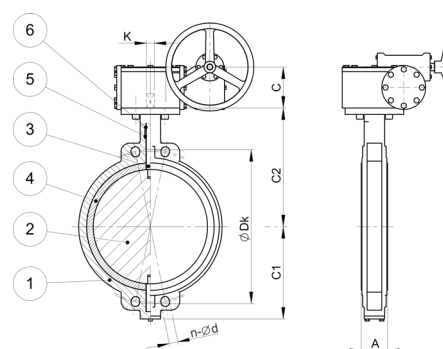
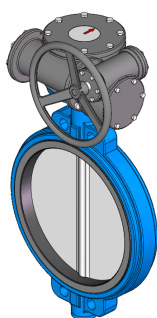


ZAPORNA LOPUTA Z ROČICO, MEDPRIROBNIČNA, TIP: LZM DI/SS / WAFER BUTTERFLY VALVE, TYPE: LZM DI/SS

DN40-DN300



DN350-DN600



// Delovna temperatura / Working temperature: 0 °C / +120 °C

Materiali / Materials

1	Ohišje Body	Nodularna litina – EN-GJS-500-7 (GGG50) – Epoksi barvan - RAL 5015 Ductile Iron – EN-GJS-500-7 (GGG50) – Epoxy Powder Coated – RAL 5015	4	Tesnilo Sealing	EPDM
2	Disk Disc	Nerjavno jeklo – GX5CrNiMo19-11-2 (A316) Stainless Steel – GX5CrNiMo19-11-2 (A316)	5	Puša Bushing	PTFE
3	Vreteno Stem	Nerjavno jeklo – X12CrS13 (A416) Stainless Steel – X12CrS13 (A416)	6	O-obroč O-ring	EPDM

LZM DI/SS

PN16

Art.	DN	A	ØDk	C1	C2	C	n-Ød	L1	E	B	F	α	ISO zgornja prirobnica / Top flange	Nastavek / Shaft K	Teža / Weight [kg]
A029529	40	33	110	65	146	28	4-Ø19	208	90	70	10	45	F07	K11	2,6
A029064	50	43	125	80	161	28	4-Ø19	208	90	70	10	45	F07	K11	3,2
A029065	65	46	145	92	175	28	4-Ø19	208	90	70	10	45	F07	K11	3,7
A029066	80	46	160	95	181	28	8-Ø19	208	90	70	10	45/22,5	F07	K11	4,3
A029067	100	52	180	114	200	28	4-Ø19	267	90	70	10	22,5	F07	K11	5,9
A029068	125	56	210	127	213	28	4-Ø23	267	90	70	10	22,5	F07	K14	6,9
A029069	150	56	240	144	226	28	4-Ø23	267	90	70	10	22,5	F07	K14	8,3
A029070	200	60	295	175	260	36	8-Ø23	323	125	102	12	22,5/15	F10	K17	14,5
A029071	250	68	355	203	290	36	4-Ø28	323	125	102	12	15	F10	K22	20,3
A029072	300	78	400*/410	242	337	36	4-Ø22*/28	415	125	102	12	15	F10	K22	29,4

LZM DI/SS

PN16

Art. nr.	DN	A	ØDk	C1	C2	C	n-Ød	E	B	F	ISO zgornja prirobnica / Top flange	Nastavek / Shaft ØSxP/K	Teža / Weight [kg]
A042306	350	80	470	270	370	80	4-Ø26	150	125	14	F12	K22	52,0
A042307	400	90	525	315	405	140	4-Ø30	210	165	22	F14	K27	101,0
A042308	450	110	585	335	425	140	4-Ø30	210	165	22	F14	K27	119,0
A042309	500	135	650	370	480	140	4-Ø33	210	165	22	F14	K27	168,0
A042310	600	160	770	465	565	150	20-Ø36	210	165	22	F16	K36	198,0

// Delovna temperatura / Working temperature: 0 °C /+80 °C

Materiali / Materials

1	Ohišje Body	Nodularna litina – EN-GJS-500-7 (GGG50) Ductile Iron – EN-GJS-500-7 (GGG50)	4	Tesnilo Sealing	NBR
2	Disk Disc	Nerjavno jeklo – GX5CrNiMo19-11-2 (A316) Stainless Steel – GX5CrNiMo19-11-2 (A316)	5	Puša Bushing	PTFE
3	Vreteno Stem	Nerjavno jeklo – X12CrS13 (A416) Stainless Steel – X12CrS13 (A416)	6	O-obroč O-ring	EPDM

LZM DI/SS

PN16

Art.	DN	A	ØDk	C1	C2	C	n-Ød	L1	E	B	F	α	ISO zgornja prirobnica / Top flange	Nastavek / Shaft K	Teža / Weight [kg]
A046069	40	33	110	65	146	28	4-Ø19	208	90	70	10	45	F07	K11	2,6
A042313	50	43	125	80	161	28	4-Ø19	208	90	70	10	45	F07	K11	3,2
A042317	65	46	145	92	175	28	4-Ø19	208	90	70	10	45	F07	K11	3,7
A042318	80	46	160	95	181	28	8-Ø19	208	90	70	10	45/22,5	F07	K11	4,3
A042319	100	52	180	114	200	28	4-Ø19	267	90	70	10	22,5	F07	K11	5,9
A042320	125	56	210	127	213	28	4-Ø23	267	90	70	10	22,5	F07	K14	6,9
A042322	150	56	240	144	226	28	4-Ø23	267	90	70	10	22,5	F07	K14	8,3
A042323	200	60	295	175	260	36	8-Ø23	323	125	102	12	22,5/15	F10	K17	14,5
A046071	250	68	355	203	290	36	4-Ø28	323	125	102	12	15	F10	K22	20,3
A059484	300	78	400*/410	242	337	36	4-Ø22*/28	415	125	102	12	15	F10	K22	29,4

Opombe

Lopute so primerne za vgradnjo med prirobnice PN10 in PN16.
*Za PN10.

Notes

Suitable for installation between flanges drilled according to PN10 and PN16.
*For PN10.