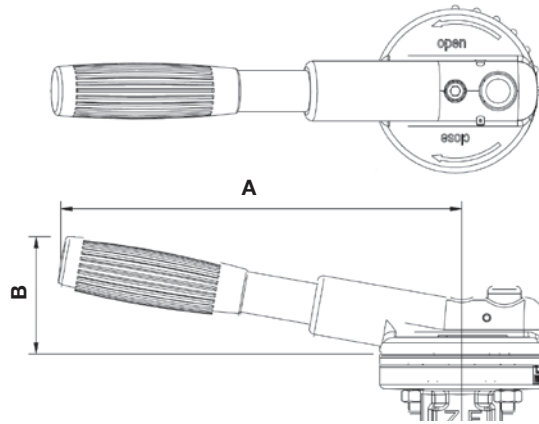
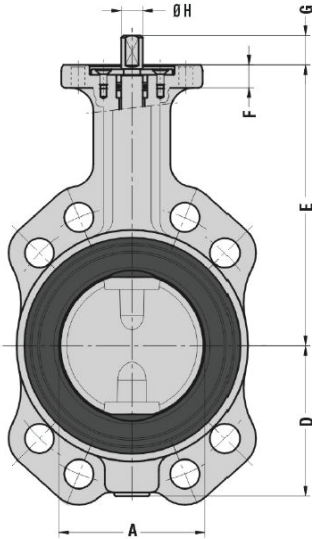
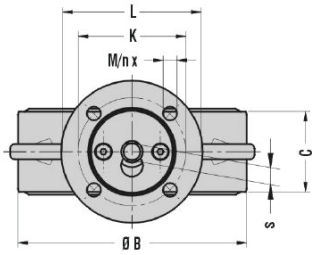


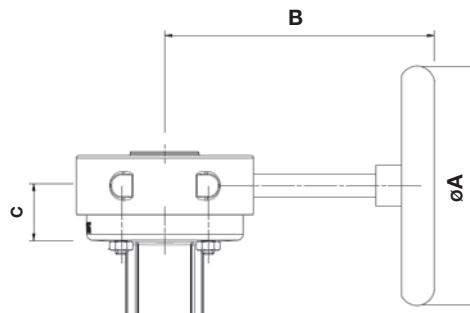
HERZ - Balancing Valves Cast Iron





Lever dimensions			
DN	A	B	kg
50 - 80	195	60	0,4
100 - 125	240	65	0,7
150 - 200	390	70	0,9

For the dimensions DN250 and DN 300 hand-wheel with worm gear is used



Gearbox dimensions				
DN	A	B	C	kg
250 - 300	315	203	37	3

DN	Type BA	Type BB	A	B	C	D	E	F	G	H	s	ISO 5211	K	L	M	n	~ kg Type BA	~ kg Type BB
50	1 4219 01	1 4219 11	50,1	94	43	68	125	13	16	12	9	F05	70	88	9	4	3,56	4,167
65	1 4219 02	1 4219 12	63,6	112	46	80	149,5	12,5	16	12	9	F05	70	88	9	4	3,84	4,7
80	1 4219 03	1 4219 13	73,3	131	46	88	156,5	12,5	16	12	9	F05	70	88	9	4	4,515	6,085
100	1 4219 04	1 4219 14	97,1	150	52	102	182	15	21	18	14	F07	70	88	9	4	6,07	7,74
125	1 4219 05	1 4219 15	122	179,5	56	120	201	15	21	18	14	F07	70	88	9	4	8,07	9,941
150	1 4219 06	1 4219 16	145,6	205	56	132	214	15	21	18	14	F07	70	88	9	4	9,84	12,38
200	1 4219 07	1 4219 17	195	262	60	163	245	18	24	22	17	F07	70	88	9	4	15	19,18
250	1 4219 08	1 4219 18	244,5	316	68	191,5	283	20	30	28	22	F10	102	130	11	4	24,1	31,23
300	1 4219 09	1 4219 19	297,6	366	78	216	308	20	30	28	22	F10	102	130	11	4	34,42	43,35

Minimum operating temperature - 20 °C
 Maximum operating temperature 110 °C
 Maximum operating pressure (DN 50 - 200) 16 bar (for water)
 Maximum operating pressure (DN 250 - 300) 10 bar (for water)

HERZ butterfly valves are available in sizes of 50 to 300.
 The flow can be limited by default. The default settings are indicated by the position of the lever.



Function

The butterfly valves can be used as isolating and regulating valves, which is achieved by the lever locking in the notch plate.

The lever is made of fiberglass-reinforced polyamide with spring-activated locking mechanism and integrated locking hole.

The top flange is made for the standard gears and actuating drives according to an ISO 5211.

The rubber liner protects the body against internal corrosion. No additional seals are required.

After final mounting the body of the butterfly valve is tested on body strength, body leakage, seat tightness and functionality according to an ISO 5208.

Field of application

Suitable for water and air systems in heating, cooling, air conditioning, ventilation, fire fighting applications and for agriculture. The valves are suitable for water and air.

The butterfly valves have the body Type "BA, WT": JL 1040, according to EN 1561, Type "BB, LT": JS1030, according to EN 1563.

The body has blue color (RAL 5000). Inside the body is a rubber liner made of EPDM in accordance with an ISO 1691, the disc is made of carbon steel, covered with nickel and the drive shaft split into 2 parts is made of Stainless Steel 1.4408 according to EN 10088.

The valves are available in Semi-lugged (type BA, WT) or Fully-lugged (type BB, LF) versions.

Type „BA, WT“

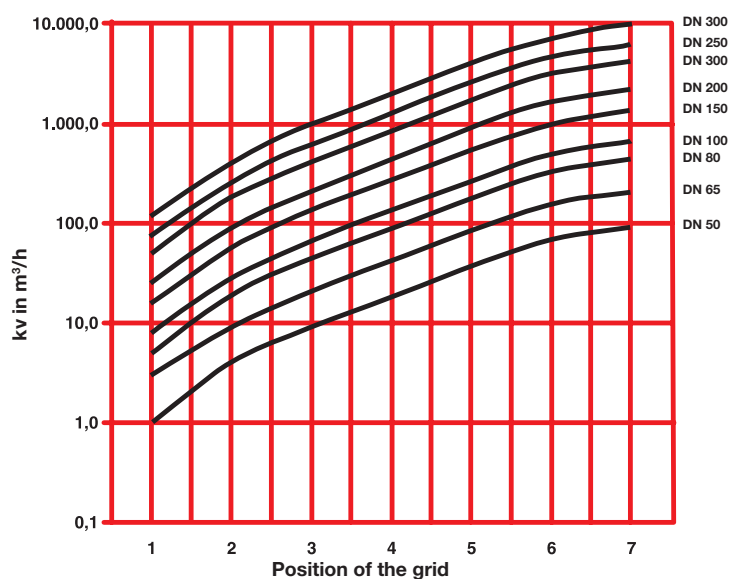


Type „BB, LT“



DN	Dim.	kv	zeta
50	2"	91 m ³ /h	1,18
65	2,5"	206 m ³ /h	0,66
80	3"	436 m ³ /h	0,34
100	4"	660 m ³ /h	0,36
125	5"	1300 m ³ /h	0,22
150	6"	2100 m ³ /h	0,18
200	8"	4100 m ³ /h	0,15
250	10"	6090 m ³ /h	0,17
300	12"	9570 m ³ /h	0,14

kv-value depending on the lever position





HERZ Valves UK

Progress House, Moorfield Point
Moorfield Road, Slyfield Industrial Estate
Guildford, Surrey GU1 1RU
Telephone: +44 (0)1483 502211, Fax: +44 (0)1483 502025
E-Mail: sales@herzvalves.com
www.herzvalves.com

HERZ Armaturen GmbH

Richard-Strauss-Str. 22, A-1230 Vienna
Tel.: +43 (0)1 616 26 31-0, Fax: +43 (0)1 616 26 31-227
E-Mail: office@herz.eu

www.herz.eu

