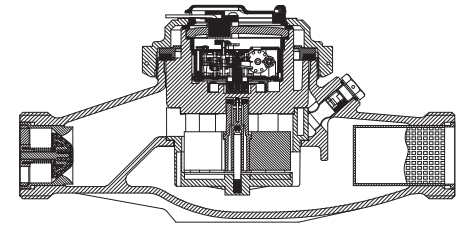


BAYLAN

WATER METERS

TK-5C

Multi jet Dry type Water Meter



GENERAL

- MID Certified
- Reading with reed sensor
- 1 pulse output at 1/10/100 Lt
- Stainless steel register cup is optional
- Low pressure loss, high sensitivity at initial flow
- Vacuumed mechanism • Suitable for potable water
- Electrostatic painted body made of corrosion resistant brass
- Available for optical reading
- 3 years of warranty • Non return valve
- Suitable for cold water up to 50°C
- Almost no maintenance • 360° rotating lid
- Service and spare parts available for 10 years
- IP68 Protected
- Environmental Classes

Climatic : -10°C/+55°C | Mechanic: M1/O | Elektromagnetic: E2

• $Q2 \leq Q \leq Q4$ Maximum Permissible Error

Class 2 Water Meters; $\% \pm 2$ (Water Temp. $\leq 30^\circ\text{C}$), $\% \pm 3$ (Water Temp. $> 30^\circ\text{C}$)

Class 1 Water Meters; $\% \pm 1$ (Water Temp. $\leq 30^\circ\text{C}$), $\% \pm 2$ (Water Temp. $> 30^\circ\text{C}$)

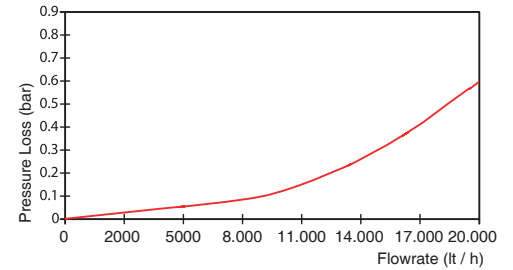
• $Q1 \leq Q < Q2$ Maximum Permissible Error

Class 2 Water Meters; $\% \pm 5$ | Class 1 Water Meters; $\% \pm 3$

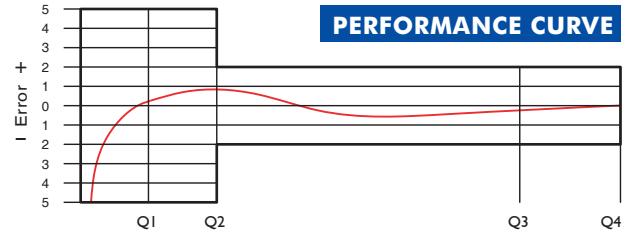
PERFORMANCE DATA

Overload Flowrate	Q4	m ³ /h	20
Permanent Flowrate	Q3	m ³ /h	16
Transitional Flowrate	Q2	m ³ /h	0,128
Minimum Flowrate	Q1	m ³ /h	0,08
Q3/Q1 (MI-001 OIML R49)			≤ 200
Mounting on the network			Horizontal
Maximum Registration Capacity			999999 / 999999,99 / 999999,999
Initial Flowrate	Qi	l/h	15
Maximum Working Pressure		bar	16
Maximum Working Temperature		°C	50
Pressure Loss Class		bar	0,63
Smallest Reading Resolution		m ³	0,00005
Class			Class 1 / Class 2
Quantity per package			4

PRESSURE LOSS CURVE



PERFORMANCE CURVE



DIMENSIONS

Nominal diameter	DN	40	mm
Connecting diameter	D	G 2	B
Total overall meter height	H	148	mm
Axis height	h	42	mm
Length	L	300	mm
Width	B	135	mm
Length with connections	LB	438	mm
Unit weight		4,18	kg
Package Weight (without connect)		18,05	kg
Package Weight (with connect)		22,00	kg
Package dimensions		34x37x36	cm

