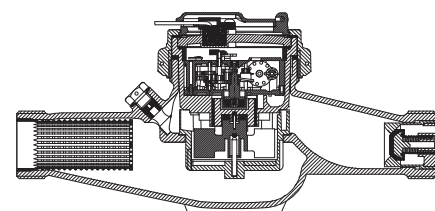


# BAYLAN

## WATER METERS

### TK-3C

## Multi jet Dry type Water Meter



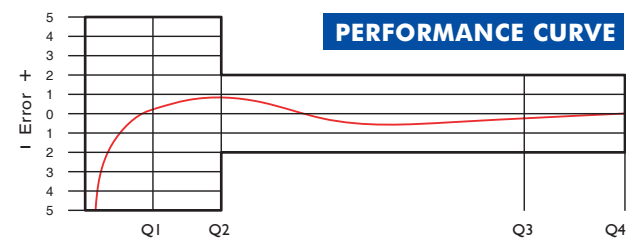
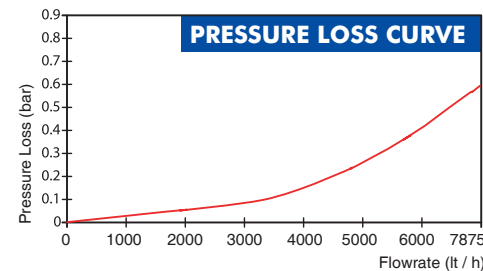
### GENERAL

- MID Certified • Impeller chamber strainer (Optional)
  - Reading with reed sensor • 1 pulse output at 1/10/100 lt
  - Suitable for potable water
  - 360° rotating lid
  - Low pressure loss, high sensitivity at initial flow
  - Electrostatic painted body made of corrosion resistant brass
  - Available for optical reading • Non return valve
  - Pulse output and AMR reading features are optional
  - 3 years of warranty • Almost no maintenance
  - Suitable for cold water up to 50°C
  - Service and spare parts available for 10 years
  - IP68 Protected
  - Environmental Classes
- Climatic : -10°C/+55°C | Mechanic: M1/O | Elektromagnetic: E2
- $Q2 \leq Q \leq Q4$  Maximum Permissible Error
  - Class 2 Water Meters;  $\% \pm 2$  (Water Temp.  $\leq 30^\circ\text{C}$ ),  $\% \pm 3$  (Water Temp.  $> 30^\circ\text{C}$ )
  - Class 1 Water Meters;  $\% \pm 1$  (Water Temp.  $\leq 30^\circ\text{C}$ ),  $\% \pm 2$  (Water Temp.  $> 30^\circ\text{C}$ )
  - $Q1 \leq Q < Q2$  Maximum Permissible Error
  - Class 2 Water Meters;  $\% \pm 5$  | Class 1 Water Meters;  $\% \pm 3$



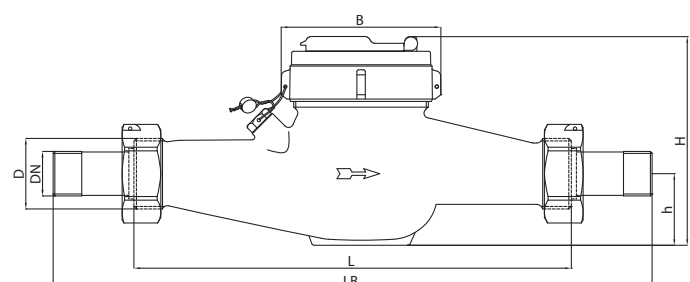
### PERFORMANCE DATA

Overload Flowrate	Q4	m <sup>3</sup> /h	7,875
Permanent Flowrate	Q3	m <sup>3</sup> /h	6,3
Transitional Flowrate	Q2	m <sup>3</sup> /h	0,04032
Minimum Flowrate	Q1	m <sup>3</sup> /h	0,0252
Q3/Q1 (MI-001 OIML R49)			$\leq 250$
Mounting on the network			Horizontal
Maximum Registration Capacity			99999 / 99999,99 / 99999,999
Initial Flowrate	Qi	l/h	7
Maximum Working Pressure	bar		16
Maximum Working Temperature	°C		50
Pressure Loss Class	bar		0,63
Smallest Reading Resolution	m <sup>3</sup>		0,00005
Class			Class 1 / Class 2
Quantity per package			10



### DIMENSIONS

Nominal diameter	DN	25	mm
Connecting diameter	D	G1 1/4	B
Total overall meter height	H	124	mm
Axis height	h	41,5	mm
Length	L	260	mm
Width	B	92	mm
Length with connections	LB	380	mm
Unit weight		1,87	kg
Package Weight (without connect)		19,70	kg
Package Weight (with connect)		24,10	kg
Package dimensions		26x52x30	cm



"Due to continuous development of our products, we reserve the right to modify our product design or construction without prior notice."