



WP-Dynamic

Turbine Water Meter for cold water up to 50 °C / PN 16, DN 40 ... DN 400

Main Features

- Hermetically sealed register (IP 68)
- Patented hydrodynamically balanced rotor (\leq DN 300)
- Patented symmetrical calibration adjustment (\leq DN 300)
- Register may be rotated through 360°
- High overload capability
- Pattern approved removable measuring element
- Powder coating affords max. corrosion protection
- Not affected by external magnetic fields
- Optionally as meter free of copper alloy (BMF) for aggressive media

APPLICATION

Measurement of high, relatively constant flow rates, e.g. behind pumps

For industrial, non-commercial use

Application for aggressive media (BMF), e.g.

- Desalinated / demineralized water
- Caustic soda up to 20 %
- Saline water up to 10 %
- Chlorinated water up to 1 %
- Glycol-water solutions up to 30 %
- Caustic solutions up to pH value 9

(Other liquids on request)

AVAILABLE OPTIONS

Up to 3 pulsers (1 x OD, 2 x RD) may be fitted without breaking the approval seal



¼" connection port for pressure sensors

Cold water meters pressure rate PN 40
please see special leaflet

WP-Dynamic

Turbine Water Meter for cold water up to 50 °C / PN 16, DN 40 ... DN 400

INSTALLATION

Pipe	horizontal vertical inclined	
Meter head	upwards sideways	

Installation Requirements

Unrestricted straight pipe in front of the meter 3 x DN
(DN400 5 x DN)

No abrupt restrictions directly behind the meter

PERFORMANCE DATA

Performance data WP-Dynamic 50 °C

Nominal Diameter			DN	40	50	65	80	100	125	150	200	250	300	400
Size of meter (acc. to ISO 4064:1-1993)			Q _n	10	15	25	40	60	100	150	250	400	600	1000
Q _{max}	maximum peak flow once in life time 24 h Q _{max} or 5 min. 1.2 x Q _{max}	(±2%)	m ³ /h	60	90	120	200	300	350	600	1200	1600	2000	3000
Q _n	continuous flow	(±2%)	m ³ /h	40	50	70	120	230	250	450	800	1250	1400	2000
Q _t	transitional flow	(±2%)	m ³ /h	0.8	0.7	0.8	0.8	1.8	2.0	4.0	6.0	11.0	15.0	50
Q _{min}	minimum flow	(±5%)	m ³ /h	0.30	0.30	0.40	0.50	0.80	1.00	1.8	4.0	6.0	12.0	25
	starting flow		m ³ /h	0.15	0.15	0.20	0.25	0.25	0.5	1.0	1.5	3.0	8.0	15

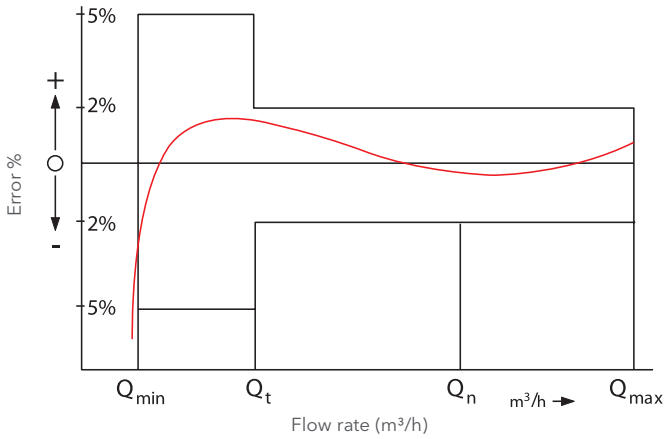
Performance data according to ISO 4064:1-1993 specification 30 °C class B

Nominal Diameter			DN	40	50	65	80	100	125	150	200	250	300	400
Size of meter (acc. to ISO 4064:1-1993)			Q _n	10	15	25	40	60	100	150	250	400	600	1000
Q _{max}	maximum peak flow short time		m ³ /h	30	30	50	80	120	200	300	500	800	1200	2000
Q _n	continuous flow		m ³ /h	15	15	25	40	60	100	150	250	400	600	1000
Q _t	transitional flow		m ³ /h	3.0	3.0	5.0	8.0	12.0	20.0	30	50	80	120	200
Q _{min}	minimum flow		m ³ /h	0.45	0.45	0.75	1.20	1.80	3.00	4.5	7.5	12.0	18.0	30

WP-Dynamic

Turbine Water Meter for cold water up to 50 °C / PN 16, DN 40 ... DN 400

Typical Accuracy Curve



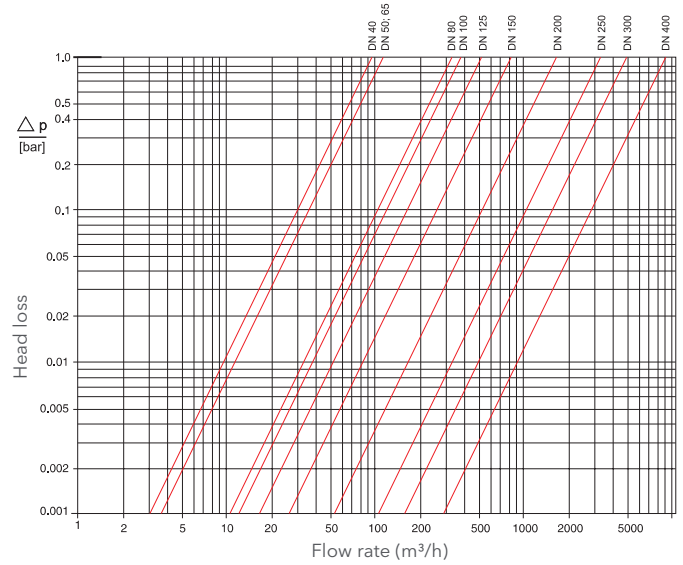
Q_{max} = maximum peak flow

Q_n = continuous flow

Q_t = transitional flow $\pm 2\%$

Q_{min} = minimum flow $\pm 5\%$

Typical Head Loss Curve

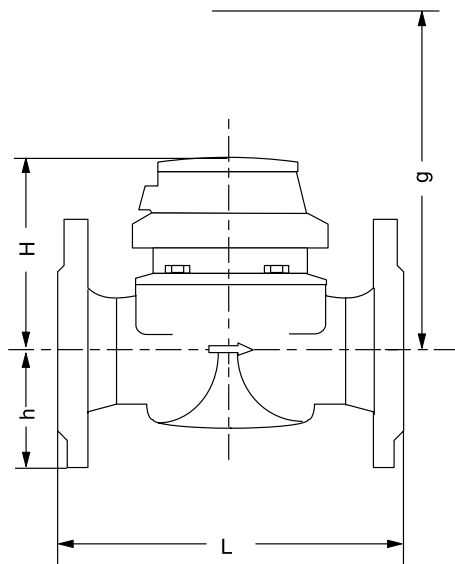


DIMENSIONS AND WEIGHTS

Nominal Diameter		DN	40	50	65	80	80	100	125	150	200	250	300	400	
Size of meter (acc. to ISO 4064:1-1993)		Q_n	10	15	25	40	40	60	100	150	250	400	600	1000	
Dimensions	overall length	$L^*)$	mm	220	200	200	200	225	250	250	300	350	450	500	500
	height	H	mm	120	120	120	150	150	150	160	177	206	231	256	380
		h	mm	69	73	85	96	95	105	118	135	162	194	226	295
		g	mm	200	200	200	270	270	270	280	356	441	466	491	785
Weights	meter		kg	7.4	7.7	10.0	13.6	14.0	18.0	20.5	35.5	50.5	72.3	99.3	187
	measuring element		kg	1.4	1.4	1.4	3.0	3.0	3.0	3.0	5.5	7.5	7.5	7.5	25
	body		kg	6.0	6.3	8.6	10.6	11.0	15.0	17.5	30.0	43.0	63.8	91.8	162

*) Other overall lengths on request

Dimensional Diagram



MATERIALS

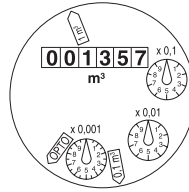
Body	PN16	cast iron
Measuring element		plastic
Rotor		plastic
We also use the following materials		brass, stainless, steel

WP-Dynamic

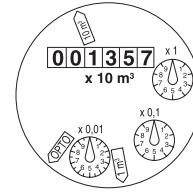
Turbine Water Meter for cold water up to 50 °C / PN 16, DN 40 ... DN 400

DIALS

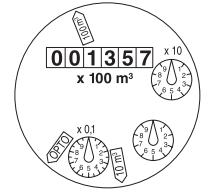
Nominal Diameter DN	Smallest Reading m ³	Max. Reading m ³
50 ... 125	0,0005	1 000 000
150 ... 300	0,005	10 000 000
400	0,05	100 000 000



DN 40 ... DN 125


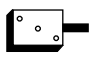


DN 150 ... DN 300



DN 400

PULSE VALUES

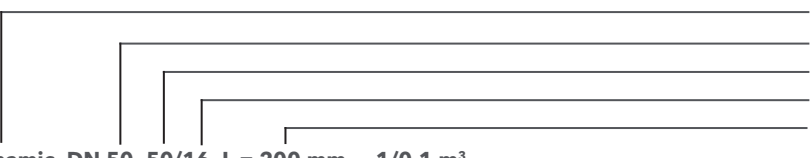
Pulser		pulse value		
		DN 40 ... DN 125	DN 150 ... DN 300	DN 400
RD 01		0.1 and 1 m ³ alternatively 0.01 and 1 m ³	1 and 10 m ³ alternatively 0.1 and 10 m ³	10 and 100 m ³
OD 01		0.001 m ³	0.01 m ³	0.1 m ³
OD 03		0.01 m ³	0.1 m ³	1 m ³

AVAILABLE VARIANTS

Nominal Diameter	DN	40	50	65	80	80	100
Overall length *)	mm	220	200	200	200	225	250
Nominal Diameter	DN	125	150	200	250	300	400
Overall length *)	mm	250	300	350	450	500	500

*) Other overall lengths on request

Order Example



WP-Dynamic, DN 50, 50/16, L = 200 mm, 1/0.1 m³

drilled according to EN 1092 PN 16

type
 diameter nominal
 working temperature
 pressure rate
 overall length
 pulse values
 flange drilling

xylem

Xylem.com | Sensus.com

UK & Ireland Inquiries | Sensus UK Systems Ltd. | +44 1256 372800 | SensusUK.Orders@xylem.com

International Inquiries | Sensus GmbH Hannover | Meineckestr. 10 | 30880 Laatzen | Germany | +49 5102 743177
info.int@xylem.com

©2020 Sensus. All products purchased and services performed are subject to Sensus' terms of sale, available at [sensus.com](https://www.sensus.com). Sensus reserves the right to modify these terms and conditions in its own discretion. The Sensus logo and other Sensus products or services referenced are registered trademarks of Sensus.

This document is for informational purposes only, and SENSUS MAKES NO EXPRESS WARRANTIES IN THIS DOCUMENT. FURTHERMORE, THERE ARE NO IMPLIED WARRANTIES, INCLUDING WITHOUT LIMITATION, WARRANTIES AS TO FITNESS FOR A PARTICULAR PURPOSE AND MERCHANTABILITY. ANY USE OF THE PRODUCTS THAT IS NOT SPECIFICALLY PERMITTED HEREIN IS PROHIBITED.