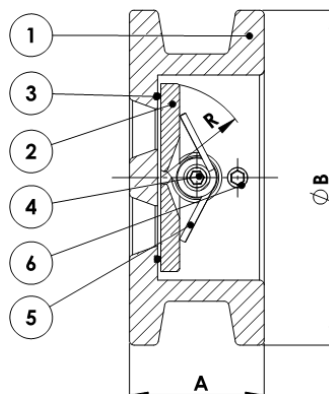
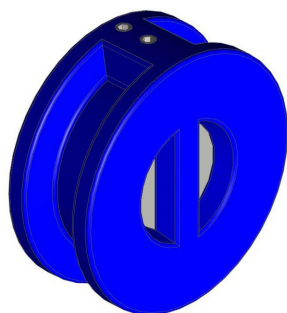


# NEPOVRATNA LOPUTA Z DVOJNIM DISKOM, MEDPRIROBNIČNA / WAFFER DOUBLE DISC CHECK VALVE

// Delovna temperatura / Working temperature: 0 °C / +100 °C



## Materiali / Materials

|   |                        |   |   |                 |   |
|---|------------------------|---|---|-----------------|---|
| 1 | Ohišje<br>Body         | Siva litina – EN-GJL-250 (GG25)<br>Cast Iron – EN-GJL-250 (GG25)            | 4 | Os<br>Axle      | Nerjavno jeklo – X5CrNi18-10 (A304)<br>Stainless Steel – X5CrNi18-10 (A304) |
| 2 | Disk<br>Disc           | Nerjavno jeklo – X5CrNi18-10 (A304)<br>Stainless Steel – X5CrNi18-10 (A304) | 5 | Vzmet<br>Spring | Nerjavno jeklo – X5CrNi18-10 (A304)<br>Stainless Steel – X5CrNi18-10 (A304) |
| 3 | Tesnilo<br>Seat gasket | EPDM  | 6 | Tesnilo<br>Seal | EPDM  |

## PN16

| Art.    | DN  | A   | ØB  | R     | Teža / Weight [kg] |
|---------|-----|-----|-----|-------|--------------------|
| A031276 | 50  | 43  | 109 | 28,8  | 1,50               |
| A031284 | 65  | 46  | 129 | 36,1  | 2,24               |
| A031281 | 80  | 64  | 144 | 43,4  | 3,50               |
| A031280 | 100 | 64  | 164 | 52,8  | 4,60               |
| A031279 | 125 | 70  | 194 | 65,7  | 6,50               |
| A031278 | 150 | 76  | 220 | 78,6  | 8,80               |
| A031277 | 200 | 89  | 275 | 104,4 | 15,50              |
| A032387 | 250 | 114 | 330 | 127,0 | 22,00              |
| A032391 | 300 | 114 | 380 | 147,0 | 30,00              |
| A044865 | 350 | 127 | 440 | 172,4 | 48,00              |
| A044866 | 400 | 140 | 491 | 197,4 | 65,00              |
| A044867 | 450 | 152 | 541 | 217,8 | 78,00              |
| A044868 | 500 | 152 | 600 | 241,0 | 110,00             |
| A044869 | 600 | 178 | 698 | 295,4 | 157,00             |

### Opombe

DN50–DN300 so na voljo tudi za vgradnjo med prirobnicami PN10.

### Notes

DN50–DN300 suitable also for installation between flanges drilled according to PN10.