



## AVK BALL CHECK VALVE, FLANGED, PN10

53/35-003

Ductile iron, DN50-600



AVK ball check valves are self-cleaning and with full bore. The ball rotates during operation eliminating the risk of impurities getting stuck on the ball. The full and smooth bore ensures full flow with low pressure loss and eliminates the risk of deposits at the bottom. AVK ball check valves are available with flanges and internal threads. They are delivered with NBR lined ball as standard and optionally with ball of polyurethane available in different weights.



### Product description:

Ball check valve with flanges for wastewater treatment and neutral liquids to max. 70° C

### Standards:

- Designed according to EN 12050-4
- Face-to-face dimension according to EN 558 Table 2 Basic Series 48
- Standard flange drilling to EN1092-2 (ISO 7005-2), PN10/16

### Test/Approvals:

- Hydraulic test according to EN12050-4.
- Approved according to 60143502, TÜV-Mark

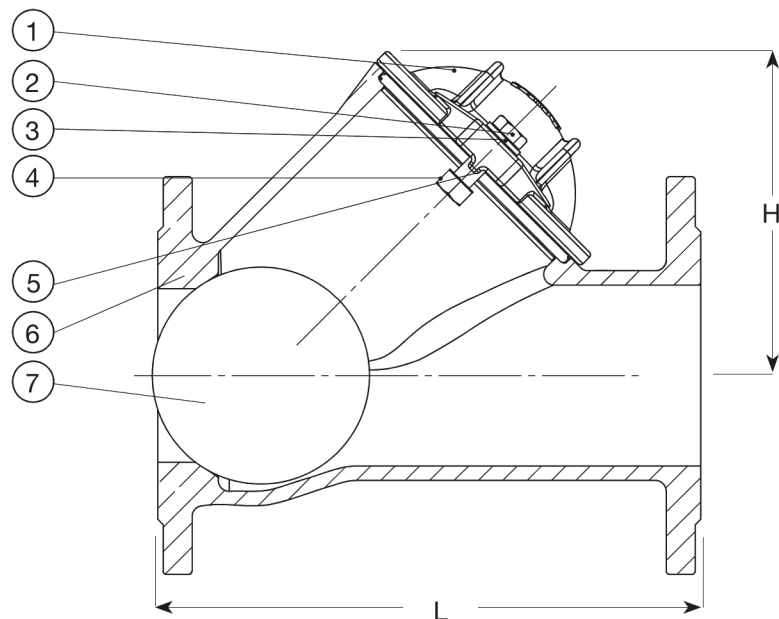
### Features:

- Self-cleaning construction, where the ball rotates during operation eliminating the risk of impurities getting stuck on the ball
- Full bore ensures low pressure loss and minimum back pressure
- Smooth bore eliminates the risk of deposits at the bottom
- NBR rubber line on a metal core to prevent the ball from getting stuck in the seat. In DN 600 the ball is of aluminium with PUR liner
- The ball is optionally available in polyurethane suitable for abrasive media and if different ball weights are necessary to prevent vibration and water hammer
- Compact design and low weight
- Bolts and nuts of stainless steel and body and cover of ductile iron with epoxy coating internally and externally according to AVK coating standard



Expect ... **AVR**

The designs, materials and specifications shown are subject to change without notice. This is due to the continuous development of our product programme.



**Component list:**

1. Cover	Ductile iron GJS-500-7 (GGG-50)	5. O-ring	NBR rubber
2. Bolt	Stainless steel A2	6. Body	Ductile iron GJS-500-7 (GGG-50)
3. Washer	Stainless steel A2	7. Ball	NBR rubber line on a metal core
4. Nut	Stainless steel, A4 acid resistance, w. delta seal		

Components may be substituted with equivalent or higher class materials without prior notification.

**AVK BALL CHECK VALVE, FLANGED, PN10****53/35-003****Ductile iron, DN50-600****Reference nos. and dimensions:**

AVK ref. no.	DN mm	Product PN Class	Flange drilling	L mm	H mm	Theoretical weight/kg
53-050-35-1007	50	PN10	PN10/16	200	101	7.5
53-065-33-1007 <sup>(1)</sup>	65/80	PN10	PN10/16	240	148	11
53-065-35-1007	65	PN10	PN10/16	240	148	10
53-080-35-1007	80	PN10	PN10/16	260	148	12
53-100-35-1007	100	PN10	PN10/16	300	182	16
53-125-35-1007	125	PN10	PN10/16	350	251	35
53-150-35-1007	150	PN10	PN10/16	400	251	32
53-200-35-0007	200	PN10	PN10	500	333	68
53-200-35-1007	200	PN10	PN16	500	333	68
53-250-35-0007	250	PN10	PN10	600	406	93
53-250-35-1007	250	PN10	PN16	600	406	93
53-300-35-0007	300	PN10	PN10	700	480	124
53-300-35-1007	300	PN10	PN16	700	480	124
53-350-35-0007	350	PN10	PN10	800	571	231
53-350-35-1007	350	PN10	PN16	800	571	231
53-400-35-0007	400	PN10	PN10	900	657	416
53-400-35-1007	400	PN10	PN16	900	657	416
53-500-35-0007 <sup>(2)</sup>	500	PN10	PN10	1100	930	712
53-600-35-0207 <sup>(3)</sup>	600	PN10	PN10	1300	1010	1200

(1) DN65 drilled with DN80 ball (Ø95 mm)  
(2) Approximate TÜV test  
(3) Approximate TÜV test. Supplied with PUR lined ball as standard



**Use:**

For water and sewage to max. 70°C.  
PUR balls max. 50°C.

**Options:**

Ball of polyurethane for special applications

**Materials:**

**Standard balls:**

Core (hollow) NBR rubber line on a metal core

**PUR balls:**

Core (solid) Polyurethane

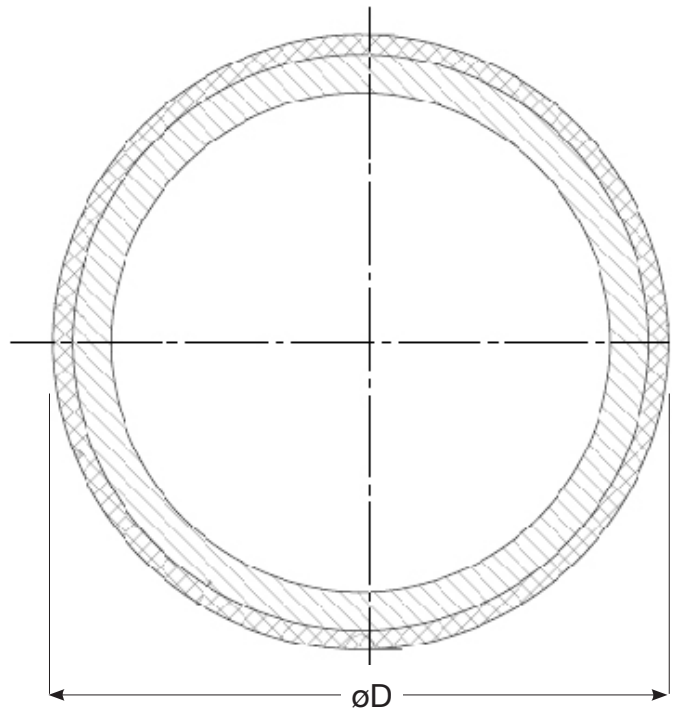
**O-rings:**

NBR



**O-rings between bonnet and body**

For AVK		
Part no.	Check valve	Diameter
1520025	DN 32/40	ø53,75 x ø3,53
010623	DN 50	ø70 x ø4,5
9610005959	DN 65	ø687,2 x ø5,7
010624	DN 80	ø104,14 x ø5,33
010625	DN 100	ø134,2 x ø5,7
010626	DN 125/150	ø189,87 x ø6,99
010627	DN 200	ø260 x ø8
9610001141	DN 250	ø320 x ø8
9610001142	DN 300	ø380 x ø10
9610001143	DN 350	ø440 x ø10
010631	DN 400	ø510 x ø10
9610000335	DN 500	ø700 x ø12
9610000336	DN 600	ø830 x ø14



**Standard rubber lined balls (NBR) with standard weights**

For AVK			
Part no.	Check valve	Diameter øD	Weight g
53-048-150	DN 32/40	48	127
53-060-150	DN 50	60	226
53-080-150	DN 65	80	427
53-095-150	DN 80	95	628
53-120-150	DN 100	120	1266
53-175-150	DN 125/150	175	3928
53-240-150	DN 200	240	9400
53-300-150	DN 250	300	17700
53-360-150	DN 300	360	30000
53-420-150	DN 350	420	48000
53-480-150	DN 400	480	72000

**PUR floating balls**

For AVK			
Part no.	Check valve	Diameter øD	Weight g
53-048-055	DN 32/40	48	48
53-060-055	DN 50	60	90
53-080-055	DN 65	80	184
53-095-055	DN 80	95	350
53-120-055	DN 100	120	561
53-175-055	DN 125/150	175	2200
53-240-055	DN 200	240	5500
53-300-055	DN 250	300	10800
53-360-055	DN 300	360	18400
53-420-055	DN 350	420	30000
53-480-055	DN 400	480	45000

**PUR balls with standard weights**

For AVK			
Part no.	Check valve	Diameter øD	Weight g
53-048-050	DN 32/40	48	127
53-060-050	DN 50	60	226
53-080-050	DN 65	80	328
53-095-050	DN 80	95	628
53-120-050	DN 100	120	1266
53-175-050	DN 125/150	175	3928
53-240-050	DN 200	240	9400
53-300-050	DN 250	300	17700
53-360-050	DN 300	360	30000
53-420-050	DN 350	420	48000
53-480-050	DN 400	480	72000

**PUR balls with 20% heavier weights**

For AVK			
Part no.	Check valve	Diameter øD	Weight g
53-048-052	DN 32/40	48	144
53-060-052	DN 50	60	256
53-080-052	DN 65	80	394
53-095-052	DN 80	95	807
53-120-052	DN 100	120	1628
53-175-052	DN 125/150	175	5505
53-240-052	DN 200	240	11300
53-300-052	DN 250	300	21300
53-360-052	DN 300	360	36000
53-420-052	DN 350	420	57000
53-480-052	DN 400	480	86000

**PUR balls with 20% lighter weights**

For AVK			
Part no.	Check valve	Diameter øD	Weight g
53-048-054	DN 32/40	48	114
53-060-054	DN 50	60	203
53-080-054	DN 65	80	252
53-095-054	DN 80	95	565
53-120-054	DN 100	120	1139
53-175-054	DN 125/150	175	3535
53-240-054	DN 200	240	8460
53-300-054	DN 250	300	15930
53-360-054	DN 300	360	27000
53-420-054	DN 350	420	43200
53-480-054	DN 400	480	64800

\* Weight tolerance +/- 5%