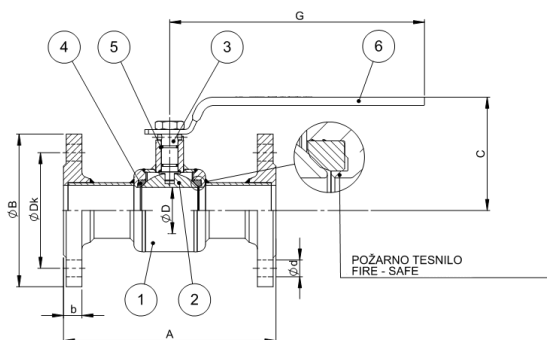
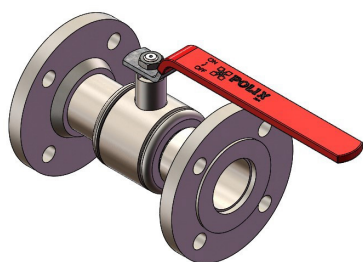


KPT PRIROBNIČNA IZ OGLJIKOVEGA JEKLA, REDUCIRAN PRETOK / KPT FLANGED CARBON STEEL, REDUCED BORE

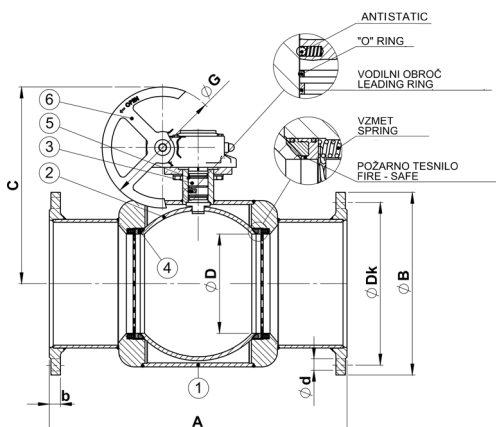
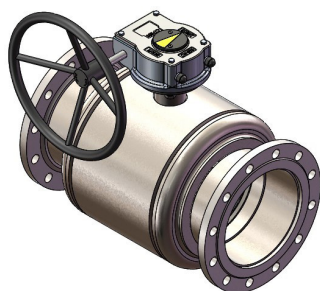


// Reduciran pretok / Reduced bore

DN20-DN250



DN300



Materiali / Materials

1	Ohišje Body	Ogljikovo jeklo – A105, P235TR2 Carbon Steel – A105, P235TR2
2	Krogla Ball	Nerjavno jeklo - 1,4301 (X5CrNi18-10) AISI 304 Stainless steel - 1,4301 (X5CrNi18-10) AISI 304
3	Vreteno Stem	Nerjavno jeklo – 1.4028 (X30Cr13) AISI 420 Stainless Steel – 1.4028(X30Cr13) AISI 420
4	Tesnilo krogle Ball seats	PTFE*
5	O-obroč O-Ring	PTFE + Viton
6	Ročica Handle	Ogljikovo jeklo (cinkano) – S235JR (St 37-2) Carbon steel (galvanized) – S235JR (St 37-2)

*DN20, DN25, DN200, DN250, DN300 imajo tesnilo s 15% grafitom.

*DN20, DN25, DN200, DN250, DN300 have a 15% graphite seal.

Navor / Torque

DN	Maks. navor Max torque P = 16 bar T = 20°C	Maks. navor Max torque P = 40 bar T = 20°C	Prilagodljivi navor za pogon Recommendable torque for actuator
	[Nm]	[Nm]	[Nm]
20	8	15	20
25	15	20	30
32	20	30	45
40	25	40	60
50	35	55	80
65	45	80	120
80	60	100	150
100	90	150	200
125	180	350	450
150	250	500	700
200	400	700	1000
250	500	700	1200
300	600	800	1200

Opomba: Navori so bili izmerjeni s čisto vodo pri sobni temperaturi na ventilih s PTFE tesnili. Navor se lahko poveča pri ventilih, ki imajo tesnila iz drugačnih materialov, pri merjenju z različnimi tekočinami, višjimi temperaturami, posebnimi obratovalnimi pogoji in/ali v primeru, da je ventil dlje časa pod diferencialnim tlakom, ne da bi obratoval.

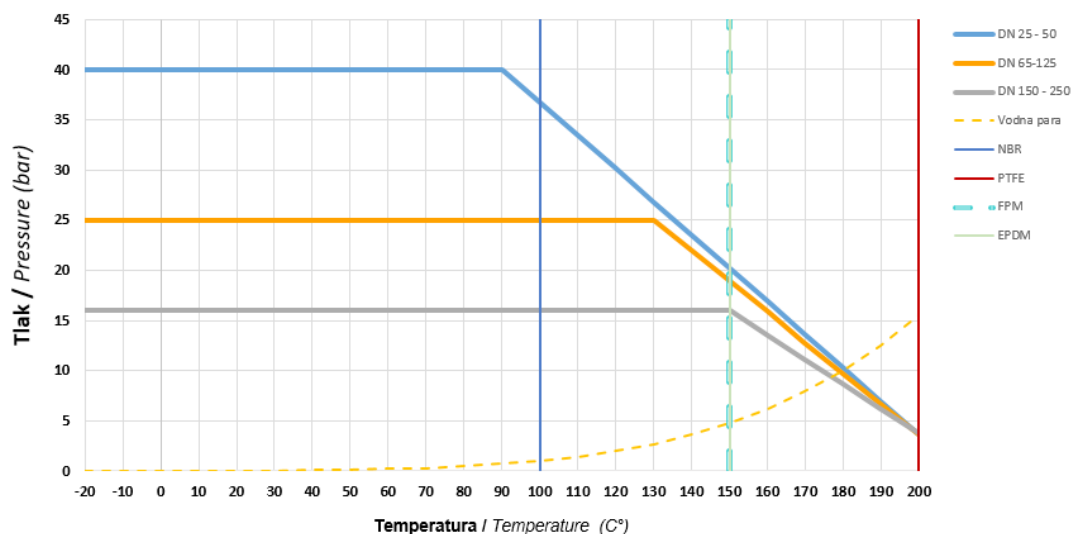
Remarks: The torques were measured on valves supplied with virgin PTFE seats, with clean water at room temperature. For valves with other seat material, different fluids, higher temperatures, specific operating conditions and/or in case the valve is kept for a long time under differential pressure without being operated, the torque can increase.

// Delovna temperatura / Working temperature: -20 °C/+200 °C

(Za temperature nižje od -20 °C kontaktirajte proizvajalca /

For temperature below -20 °C please contact manufacturer)

Diagram tlak I temperatura / Pressure I temperature chart



Tesnila vreteno, ohišje / Stem, body seals

NBR (Max 100 °C)

FPM (Max 150 °C)

EPDM (Max 150 °C)

PTFE (Max 200 °C)

KPT DN ... PN16 RP PX PX

PN16

Art.	DN	A	ØB	C	ØD	G	b	ØDk	Ød	Št. / Nr.	Teža / weight [kg]
A958702	20	150	105	71,6	15,9	153	16	75	14	4	2,17
A958703	25	160	115	82,6	20	153	16	85	14	4	2,68
A958704	32	180	140	90,3	25	153	16	100	18	4	3,82
A958705	40	200	150	108,3	31	237	16	110	18	4	5,02
A958706	50	230	165	116	40	276	18	125	18	4	7,68
A958707	65	290	185	122,5	50	276	18	145	18	4	10,12
A958708	80	310	200	148,6	63,5	340	20	160	18	8	15,12
A958709	100	350	220	160,6	78	340	20	180	18	8	22,36
A958710	125	400	250	174,6	99	340	22	210	18	8	33,32
A958311	150	450	285	219	125	545	22	240	22	8	43,43
A958312	200	550	340	246	150	545	24	295	22	12	71,93
A958313	250	650	405	322,5	200	1000	26	355	26	12	139,73
A958314	300	750	460	495	250	Ø305	28	410	26	12	201,00

KPT DN ... PN40 RP PX PX

PN40

Art.	DN	A	ØB	C	ØD	G	b	ØDk	Ød	Št. / Nr.	Teža / weight [kg]
A958302	20	150	105	71,6	15,9	153	18	75	14	4	2,57
A958303	25	160	115	82,6	20	153	18	85	14	4	3,18
A958304	32	180	140	90,3	25	153	18	100	18	4	4,52
A958305	40	200	150	108,3	31	237	18	110	18	4	5,52
A958306	50	230	165	116	40	276	20	125	18	4	8,58
A958307	65	290	185	122,5	50	276	22	145	18	8	11,52
A958308	80	310	200	148,6	63,5	340	24	160	18	8	16,92
A958309	100	350	235	160,6	78	340	24	190	22	8	24,46
A958310	125	400	270	174,6	99	340	26	220	26	8	35,72
A958711	150	450	300	219	125	545	28	250	26	8	45,43
A958712	200	550	375	246	150	545	34	320	30	12	73,93
A958713	250	650	450	322,5	200	1000	38	385	33	12	142,73
A958714	300	750	515	495	250	Ø305	42	450	33	16	246,50

Prirobnice 40 bar - maks. dovoljen tlak / Flanges 40 bar - max. allowable pressure: DN65-DN125 = 25 bar, DN150-DN300 = 16 bar

Opombe

Vgradna dolžina ustreza standardu EN558-1 Basic series 28.
DN300: vzmetena tesnila, antistatična izvedba, ročni polžni pogon.
Požarno tesnilo. Nadgradnje na strani 89 - 95.

Notes

Face to face dimensions conform to EN558-1 Basic series 28.
DN300: spring loaded washers, antistatic design, manual gearbox.
Fire safe design. Upgrades on pages 89 - 95.