

An indirectly heated and upright water heater including a permanently welded-in heating coil, suitable for all modern heating systems.





Advantages

- Minimum lime deposits due to smooth surfaces. High-quality glass lining according to DIN 4753/part 3 for potable hot water production and optimum corrosion protection by means of a standard Mg-anode.
- Equipped with a built-in thermometer and immersion pipe.
- A set of adjustable feet is optionally available (Art.No. 18989).
- From 400 litres, equipped with a DN 110 inspection flange at the side, suitable for connecting additional heating elements; Ex Works - closed with a removeable blind flange.
- The heating coil is designed to ensure full depth heating to prevent the accretion of Legionella bacteria.

Technical Specifications

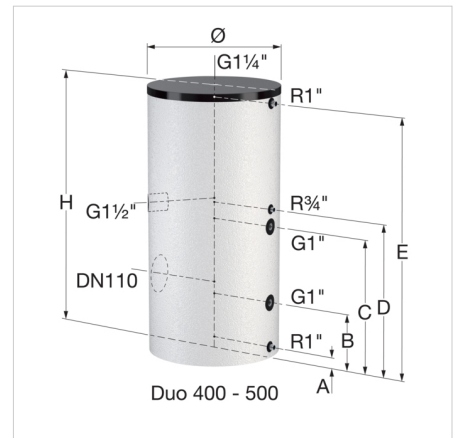
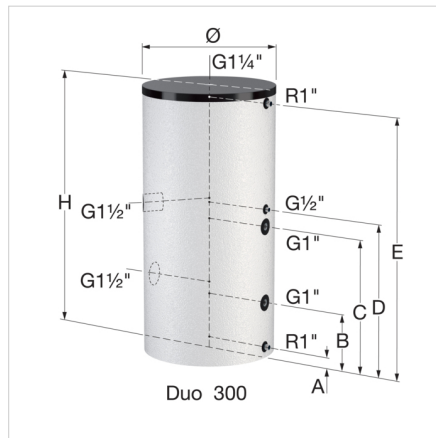
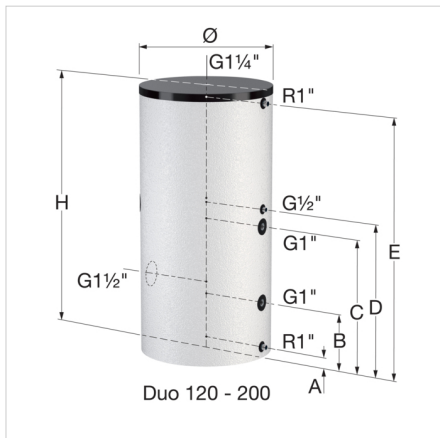
- Maximum working pressure: 10 bar (potable water vessel) / 16 bar (heating coil).
- Maximum working temperature: 95 °C (potable water vessel) / 130 °C (heating coil).
- Insulation:
Standard colours: white (RAL 9010) and white aluminium (RAL 9006).
Including hard foam insulation (direct foam injection) with a polystyrene outer shell.

Type	Capacity [l]	Dimensions *			Heating surface area [m ²]	Heating capacity [kW] **	Water capacity [l/h] **	Insulation colour	Weight [kg]		Order Code
		Ø [mm]	H [mm]	Tilting-height [mm]							
FlexTherm Duo 120 white alu.	120	560	940	1090	0.5	10.2	177	white alu.	63	1	18501
FlexTherm Duo 120 white	120	560	940	1090	0.5	10.2	177	white	63	1	18500
FlexTherm Duo 150 white alu.	150	560	1050	1200	0.6	11.6	202	white alu.	68	1	18503
FlexTherm Duo 150 white	150	560	1050	1200	0.6	11.6	202	white	68	1	18502
FlexTherm Duo 200 white alu.	200	560	1350	1500	0.9	18.6	323	white alu.	86	1	18505

Type	Capacity [l]	Dimensions *			Heating surface area [m ²]	Heating capacity [kW] **	Water capacity [l/h] **	Insulation colour	Weight [kg]		Order Code
		Ø [mm]	H [mm]	Tilting-height [mm]							
FlexTherm Duo 200 white	200	560	1350	1500	0.9	18.6	323	white	86	1	18504
FlexTherm Duo 300 white alu.	300	660	1620	1750	1.3	29.5	513	white alu.	105	1	18447
FlexTherm Duo 300 white	300	660	1620	1750	1.3	29.5	513	white	105	1	18435
FlexTherm Duo 400 white alu.	400	750	1530	1715	1.6	35.4	615	white alu.	158	1	18390
FlexTherm Duo 400 white	400	750	1530	1715	1.6	35.4	615	white	158	1	18423
FlexTherm Duo 500 white alu.	500	750	1730	1895	2.0	45.2	785	white alu.	181	1	18395
FlexTherm Duo 500 white	500	750	1730	1895	2.0	45.2	785	white	181	1	18429

* Dimensions including insulation.

** At 80 °C supply temperature and 60 °C potable water temperature.



FlexTherm Duo 120 - 500 - Connection diagram

Type	Distance from floor to connection centres				
	A [mm]	B [mm]	C [mm]	D [mm]	E [mm]
FlexTherm Duo 120	65	245	545	635	885
FlexTherm Duo 150	65	245	590	690	985
FlexTherm Duo 200	65	245	710	885	1285
FlexTherm Duo 300	65	310	750	850	1560
FlexTherm Duo 400	70	330	770	870	1470
FlexTherm Duo 500	70	330	890	990	1670

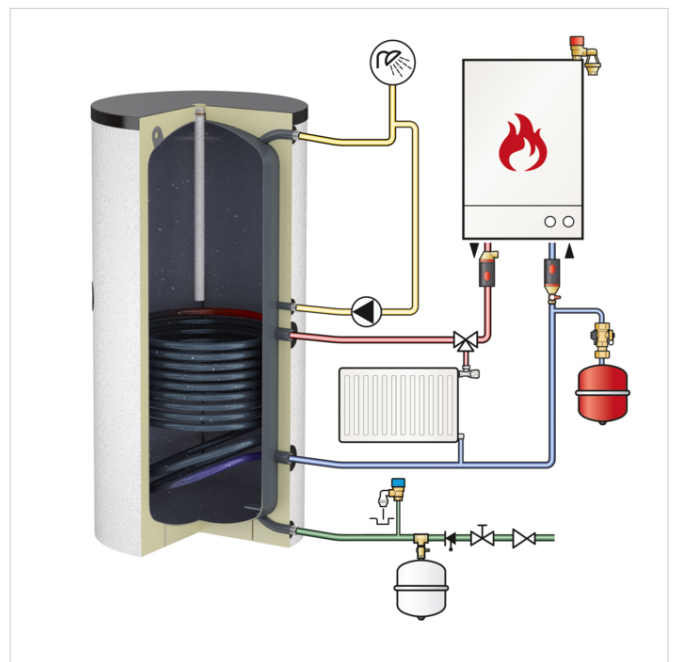
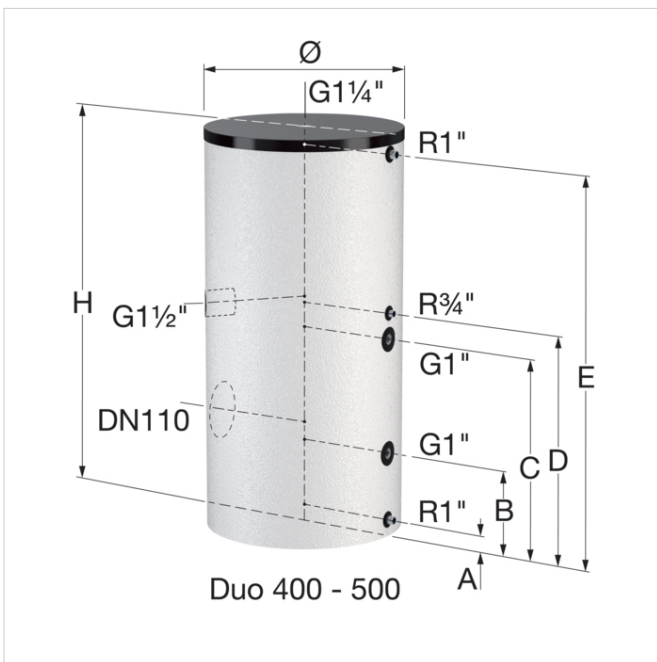
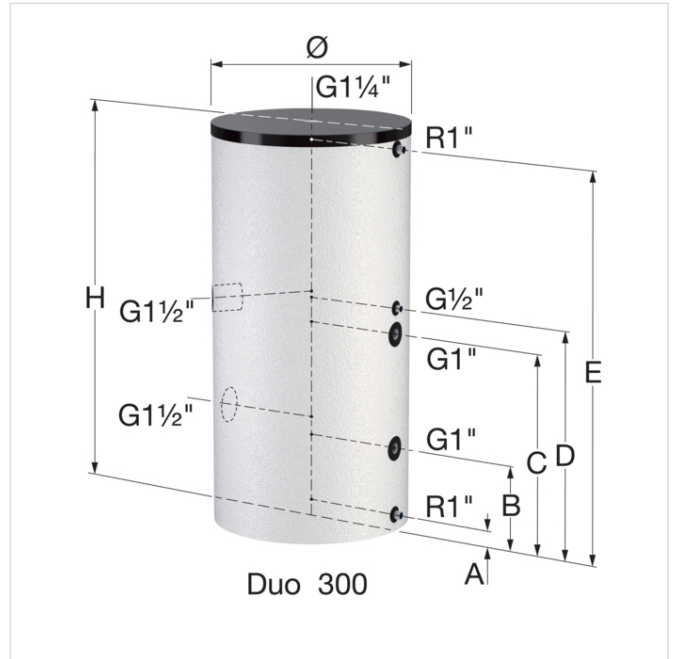
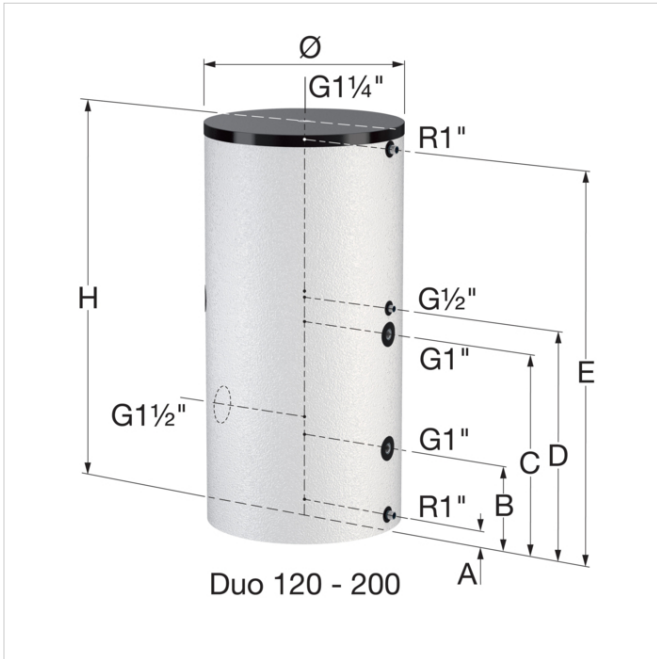
FlexTherm Duo - Performance

Technical specifications	FlexTherm Duo										
	120	150	200	300	400	500	750	1000	1500	2000	3000
Total heat loss (EN 12897) [W]	56	63	83	87	96	102	117	145	160	181	n/a
Energy label	C	C	C	C	C	C	C	C	C	C	n/a
Insulation thickness [mm]	80	80	80	80	80	80	80	80	100	100	100
Performance index (T => 60 °C) [NL]	1.3	2.1	4.0	8.6	14.0	20.0	29.0	42.0	80.0	110.0	201.0
Continuous power (T => 45 °C) [kW] **	14.7	16.7	26.8	42.8	51.3	65.4	97.7	107.5	207.9	247.9	247.9
Continuous power (T => 60 °C) [kW] **	10.2	11.6	18.6	29.5	35.4	45.2	67.1	73.9	143.0	170.0	170.0
Continuous power (T => 70 °C) [kW] **	11.8	13.5	21.5	34.3	41.1	52.4	78.2	86.1	166.5	198.2	198.2
Peak flow (T => 40 °C) [l/10 min.] *	94	100	147	200	294	300	574	600	800	1000	1200
Peak flow (T => 60 °C) [l/10 min.] *	89	100	144	200	287	300	549	600	800	1000	1200
Continuous output (T => 40 °C) [l/h] *	357	409	653	1038	1245	1588	2362	2599	5028	5980	5980
Continuous output (T => 40 °C) [l/h] **	440	500	799	1279	1532	1953	2917	3211	6208	7402	7402
Continuous output (T => 45 °C) [l/h] **	364	414	662	1059	1269	1617	2415	2659	5141	6128	6128
Continuous output (T => 60 °C) [l/h] *	177	202	323	513	615	785	1166	1283	2483	2951	2951
Continuous output (T => 70 °C) [l/h] **	171	195	312	497	595	759	1132	1246	2410	2869	2869
First hour output (T => 40 °C) [l/h] *	391	442	691	1066	1331	1629	2543	2794	4978	5985	6336
First hour output (T => 60 °C) [l/h] *	236	272	413	633	799	982	1521	1734	2990	3662	4190
First hour output (T => 70 °C) [l/h] *	231	266	403	620	782	961	1492	1704	2933	3600	4132
Heat up time (T => 40 °C) [min.] **	16	18	15	14	16	15	15	19	14	16	24
Heat up time (T => 45 °C) [min.] **	20	22	18	17	19	19	19	23	18	20	29
Set drain rate [l/min.]	10	10	15	20	30	30	60	60	80	100	120
Hot water flow (T => 60 °C) [l/h] *	500	500	800	1500	1700	2100	3900	4400	8000	11000	11000
Heating surface of the coil [m ²]	0.5	0.6	0.9	1.3	1.6	2.0	2.7	3.2	6.4	7.3	7.3
Pressure drop coil 80/60 °C [kPa]	0.4	0.5	1.6	6.8	10.2	18.7	5.4	7.3	5.0	9.8	9.8

* Hot leg temperature: 80 °C, cold water temperature: 10 °C.

** Hot leg temperature: 90 °C, cold water temperature: 10 °C.

n/a = not applicable.



Find more information online:

[Installation and operating instruction](#)

[PZH certificate](#)

[Duo ADSK](#)

[Duo DWG](#)

[Duo IPT](#)

[Duo STEP](#)

[Selection Guide](#)

[ErP label Duo 120](#)

[ErP label Duo 150](#)

[ErP label Duo 200](#)

[ErP label Duo 300](#)

[ErP label Duo 400](#)

[ErP label Duo 500](#)

[Packaging data](#)

Fort Blauwkapel 1
1358 DB, Almere - nl

T +31 (0)36 52 62 300
E info@aalberts-hfc.com
I flamcogroup.com

An indirectly heated and upright water heater including a permanently welded-in heating coil, suitable for all modern heating systems.




Advantages

- Minimum lime deposits due to smooth surfaces. High-quality glass lining according to DIN 4753/part 3 for potable hot water production and optimum corrosion protection by means of a standard Mg-anode.
- Equipped with a built-in thermometer.
- Including a clamping strip with which a temperature sensor can be affixed at any chosen height to enable optimum heat efficiency of the water heater.
- Feet adjustable in height for accurate levelling.
- Inspection flange at the side: DN 205, suitable for connecting additional heating elements; Ex Works - closed with a removeable blind flange.
- Suitable for connecting additional heating elements and fitted with a coupling sleeve for accessories.
- The heating coil is designed to ensure full depth heating to prevent the accretion of Legionella bacteria.

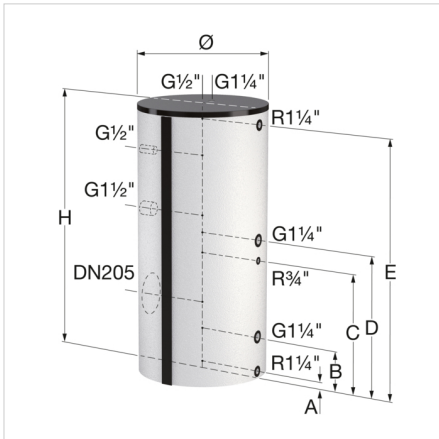
Technical Specifications

- Maximum working pressure: 10 bar (potable water vessel) / 16 bar (heating coil).
- Maximum working temperature: 95 °C (potable water vessel) / 110 °C (heating coil).
- Insulation:
Standard colours: white (RAL 9010) and white aluminium (RAL 9006).
Including EPS insulating mantle (fire category B1) with a polypropylene outer shell (fire category B2).

Type	Capacity [l]	Dimensions *			Heating surface area [m ²]	Heating capacity [kW] **	Water capacity [l/h] **	Insulation colour	Weight [kg]		Order Code
		Ø [mm]	H [mm]	Tilting height [mm]							
FlexTherm Duo 750 white	750	750	1970	2070	2.7	67.1	1166	white	280	1	19297
FlexTherm Duo 750 white alu.	750	750	1970	2070	2.7	67.1	1166	white alu.	280	1	19298
FlexTherm Duo 1000 white	1000	800	2230	2320	3.2	73.9	1283	white	360	1	19305
FlexTherm Duo 1000 white alu.	1000	800	2230	2320	3.2	73.9	1283	white alu.	360	1	19306

* Dimensions excluding insulation.

** At 80 °C supply temperature and 60 °C potable water temperature.



FlexTherm Duo 750 - 1000 - Connection diagram

Type	Distance from floor to connection centres				
	A [mm]	B [mm]	C [mm]	D [mm]	E [mm]
FlexTherm Duo 750	60	320	890	1040	1880
FlexTherm Duo 1000	70	330	960	1110	2140

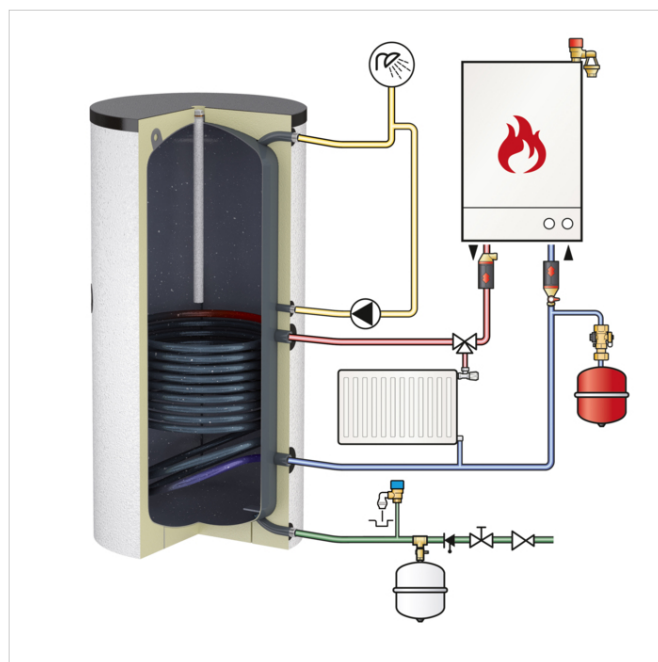
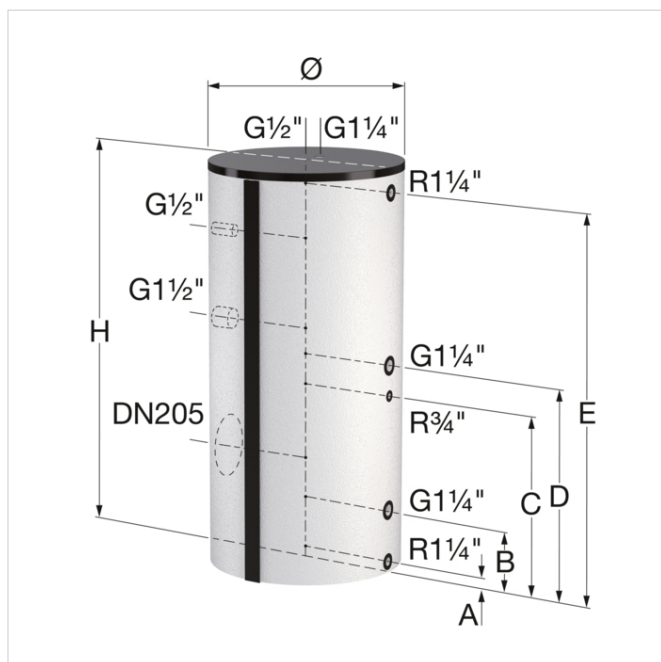
FlexTherm Duo - Performance

Technical specifications	FlexTherm Duo										
	120	150	200	300	400	500	750	1000	1500	2000	3000
Total heat loss (EN 12897) [W]	56	63	83	87	96	102	117	145	160	181	n/a
Energy label	C	C	C	C	C	C	C	C	C	C	n/a
Insulation thickness [mm]	80	80	80	80	80	80	80	80	100	100	100
Performance index (T => 60 °C) [NL]	1.3	2.1	4.0	8.6	14.0	20.0	29.0	42.0	80.0	110.0	201.0
Continuous power (T => 45 °C) [kW] **	14.7	16.7	26.8	42.8	51.3	65.4	97.7	107.5	207.9	247.9	247.9
Continuous power (T => 60 °C) [kW] **	10.2	11.6	18.6	29.5	35.4	45.2	67.1	73.9	143.0	170.0	170.0
Continuous power (T => 70 °C) [kW] **	11.8	13.5	21.5	34.3	41.1	52.4	78.2	86.1	166.5	198.2	198.2
Peak flow (T => 40 °C) [l/10 min.] *	94	100	147	200	294	300	574	600	800	1000	1200
Peak flow (T => 60 °C) [l/10 min.] *	89	100	144	200	287	300	549	600	800	1000	1200
Continuous output (T => 40 °C) [l/h] *	357	409	653	1038	1245	1588	2362	2599	5028	5980	5980
Continuous output (T => 40 °C) [l/h] **	440	500	799	1279	1532	1953	2917	3211	6208	7402	7402
Continuous output (T => 45 °C) [l/h] **	364	414	662	1059	1269	1617	2415	2659	5141	6128	6128
Continuous output (T => 60 °C) [l/h] *	177	202	323	513	615	785	1166	1283	2483	2951	2951
Continuous output (T => 70 °C) [l/h] **	171	195	312	497	595	759	1132	1246	2410	2869	2869
First hour output (T => 40 °C) [l/h] *	391	442	691	1066	1331	1629	2543	2794	4978	5985	6336
First hour output (T => 60 °C) [l/h] *	236	272	413	633	799	982	1521	1734	2990	3662	4190
First hour output (T => 70 °C) [l/h] *	231	266	403	620	782	961	1492	1704	2933	3600	4132
Heat up time (T => 40 °C) [min.] **	16	18	15	14	16	15	15	19	14	16	24
Heat up time (T => 45 °C) [min.] **	20	22	18	17	19	19	19	23	18	20	29
Set drain rate [l/min.]	10	10	15	20	30	30	60	60	80	100	120
Hot water flow (T => 60 °C) [l/h] *	500	500	800	1500	1700	2100	3900	4400	8000	11000	11000
Heating surface of the coil [m ²]	0.5	0.6	0.9	1.3	1.6	2.0	2.7	3.2	6.4	7.3	7.3
Pressure drop coil 80/60 °C [kPa]	0.4	0.5	1.6	6.8	10.2	18.7	5.4	7.3	5.0	9.8	9.8

* Hot leg temperature: 80 °C, cold water temperature: 10 °C.

** Hot leg temperature: 90 °C, cold water temperature: 10 °C.

n/a = not applicable.



Find more information online:

[Installation and operating instruction](#)

[PZH certificate](#)

[Duo ADSK](#)

[Duo DWG](#)

[Duo IPT](#)

[Duo STEP](#)

[Selection Guide](#)

[Packaging data](#)

Fort Blauwkapel 1
1358 DB, Almere - nl

T +31 (0)36 52 62 300
E info@aalberts-hfc.com
I flamcogroup.com

An indirectly heated and upright water heater including a permanently welded-in heating coil, suitable for all modern heating systems.





Advantages

- Minimum lime deposits due to smooth surfaces. High-quality glass lining according to DIN 4753/part 3 for potable hot water production and optimum corrosion protection by means of a FSA no-maintenance anode.
- Equipped with a built-in thermometer.
- Feet adjustable in height for accurate levelling.
- Inspection flange at the side: DN 205, suitable for connecting additional heating elements; Ex Works - closed with a removeable blind flange.
- Suitable for connecting additional heating elements and fitted with a coupling sleeve for accessories.
- The heating coil is designed to ensure full depth heating to prevent the accretion of Legionella bacteria.

Technical Specifications

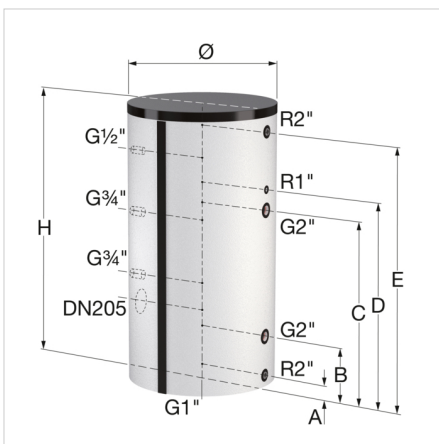
- Maximum working pressure: 10 bar (potable water vessel) / 16 bar (heating coil).
- Maximum working temperature: 95 °C (potable water vessel) / 110 °C (heating coil).
- Insulation:
Standard colours: white (RAL 9010) and white aluminium (RAL 9006).
Including EPS insulating mantle (fire category B1) with a polypropylene outer shell (fire category B2).

Type	Capacity [l]	Dimensions *			Heating surface area [m ²]	Heating capacity [kW] **	Water capacity [l/h] **	Insulation colour	Weight [kg]		Order Code
		Ø [mm]	H [mm]	Tilting height [mm]							
FlexTherm Duo 1500 white	1500	1000	2320	2480	6.4	143	2383	white	570	1	19310
FlexTherm Duo 1500 white alu.	1500	1000	2320	2480	6.4	143	2383	white alu.	570	1	19311
FlexTherm Duo 2000 white	2000	1100	2400	2600	7.3	170	2951	white	666	1	19315
FlexTherm Duo 2000 white alu.	2000	1100	2400	2600	7.3	170	2951	white alu.	666	1	19316

Type	Capacity [l]	Dimensions *			Heating surface area [m ²]	Heating capacity [kW] **	Water capacity [l/h] **	Insulation colour	Weight [kg]		Order Code
		Ø [mm]	H [mm]	Tilting height [mm]							
FlexTherm Duo 3000 white	3000	1200	2830	3000	7.3	170	2951	white	939	1	19318

* Dimensions excluding insulation.

** At 80 °C supply temperature and 60 °C potable water temperature.



FlexTherm Duo 1500 - 3000 - Connection diagram

Type	Distance from floor to connection centres				
	A [mm]	B [mm]	C [mm]	D [mm]	E [mm]
FlexTherm Duo 1500	85	435	1555	1735	2235
FlexTherm Duo 2000	105	455	1575	1755	2255
FlexTherm Duo 3000	95	470	1590	2205	2730

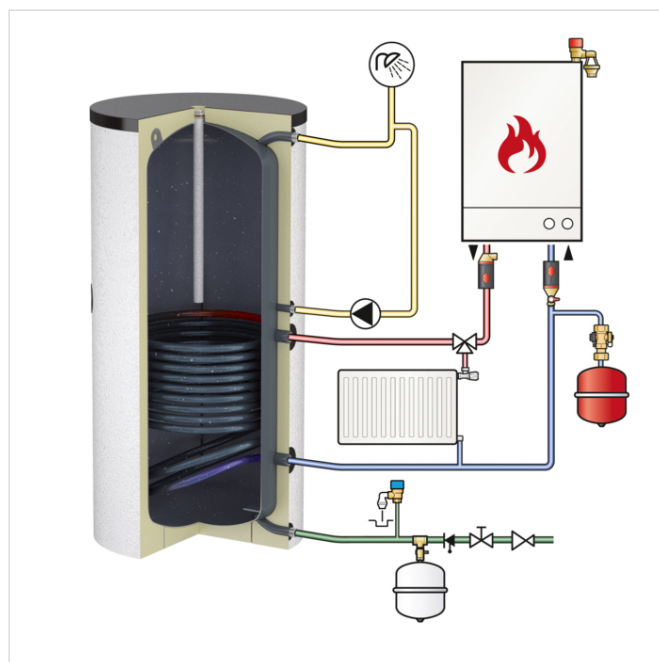
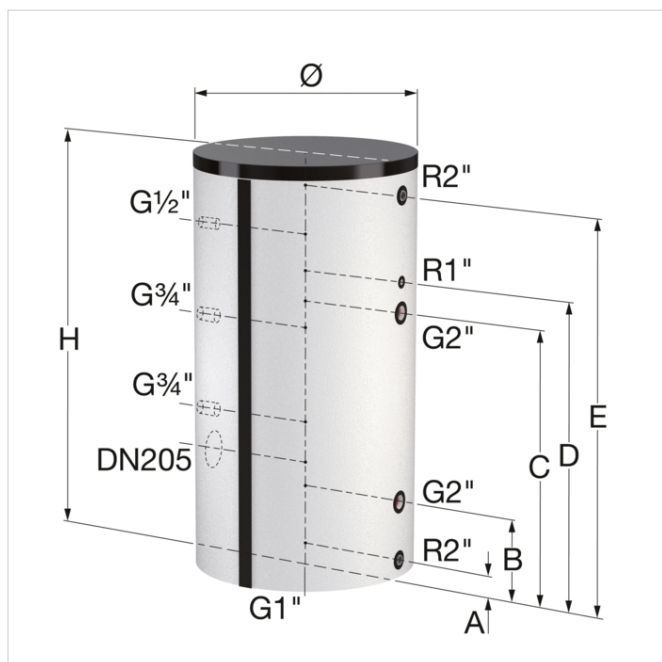
FlexTherm Duo - Performance

Technical specifications	FlexTherm Duo										
	120	150	200	300	400	500	750	1000	1500	2000	3000
Total heat loss (EN 12897) [W]	56	63	83	87	96	102	117	145	160	181	n/a
Energy label	C	C	C	C	C	C	C	C	C	C	n/a
Insulation thickness [mm]	80	80	80	80	80	80	80	80	100	100	100
Performance index (T => 60 °C) [NL]	1.3	2.1	4.0	8.6	14.0	20.0	29.0	42.0	80.0	110.0	201.0
Continuous power (T => 45 °C) [kW] **	14.7	16.7	26.8	42.8	51.3	65.4	97.7	107.5	207.9	247.9	247.9
Continuous power (T => 60 °C) [kW] **	10.2	11.6	18.6	29.5	35.4	45.2	67.1	73.9	143.0	170.0	170.0
Continuous power (T => 70 °C) [kW] **	11.8	13.5	21.5	34.3	41.1	52.4	78.2	86.1	166.5	198.2	198.2
Peak flow (T => 40 °C) [l/10 min.] *	94	100	147	200	294	300	574	600	800	1000	1200
Peak flow (T => 60 °C) [l/10 min.] *	89	100	144	200	287	300	549	600	800	1000	1200
Continuous output (T => 40 °C) [l/h] *	357	409	653	1038	1245	1588	2362	2599	5028	5980	5980
Continuous output (T => 40 °C) [l/h] **	440	500	799	1279	1532	1953	2917	3211	6208	7402	7402
Continuous output (T => 45 °C) [l/h] **	364	414	662	1059	1269	1617	2415	2659	5141	6128	6128
Continuous output (T => 60 °C) [l/h] *	177	202	323	513	615	785	1166	1283	2483	2951	2951
Continuous output (T => 70 °C) [l/h] **	171	195	312	497	595	759	1132	1246	2410	2869	2869
First hour output (T => 40 °C) [l/h] *	391	442	691	1066	1331	1629	2543	2794	4978	5985	6336
First hour output (T => 60 °C) [l/h] *	236	272	413	633	799	982	1521	1734	2990	3662	4190
First hour output (T => 70 °C) [l/h] *	231	266	403	620	782	961	1492	1704	2933	3600	4132
Heat up time (T => 40 °C) [min.] **	16	18	15	14	16	15	15	19	14	16	24
Heat up time (T => 45 °C) [min.] **	20	22	18	17	19	19	19	23	18	20	29
Set drain rate [l/min.]	10	10	15	20	30	30	60	60	80	100	120
Hot water flow (T => 60 °C) [l/h] *	500	500	800	1500	1700	2100	3900	4400	8000	11000	11000
Heating surface of the coil [m ²]	0.5	0.6	0.9	1.3	1.6	2.0	2.7	3.2	6.4	7.3	7.3
Pressure drop coil 80/60 °C [kPa]	0.4	0.5	1.6	6.8	10.2	18.7	5.4	7.3	5.0	9.8	9.8

* Hot leg temperature: 80 °C, cold water temperature: 10 °C.

** Hot leg temperature: 90 °C, cold water temperature: 10 °C.

n/a = not applicable.

**Find more information online:**

[Installation and operating instruction](#)

[PZH certificate](#)

[Duo ADSK](#)

[Duo DWG](#)

[Duo IPT](#)

[Duo STEP](#)

[Selection Guide](#)

[Packaging data](#)

Fort Blauwkapel 1
1358 DB, Almere - nl

T +31 (0)36 52 62 300
E info@aalberts-hfc.com
I flamcogroup.com